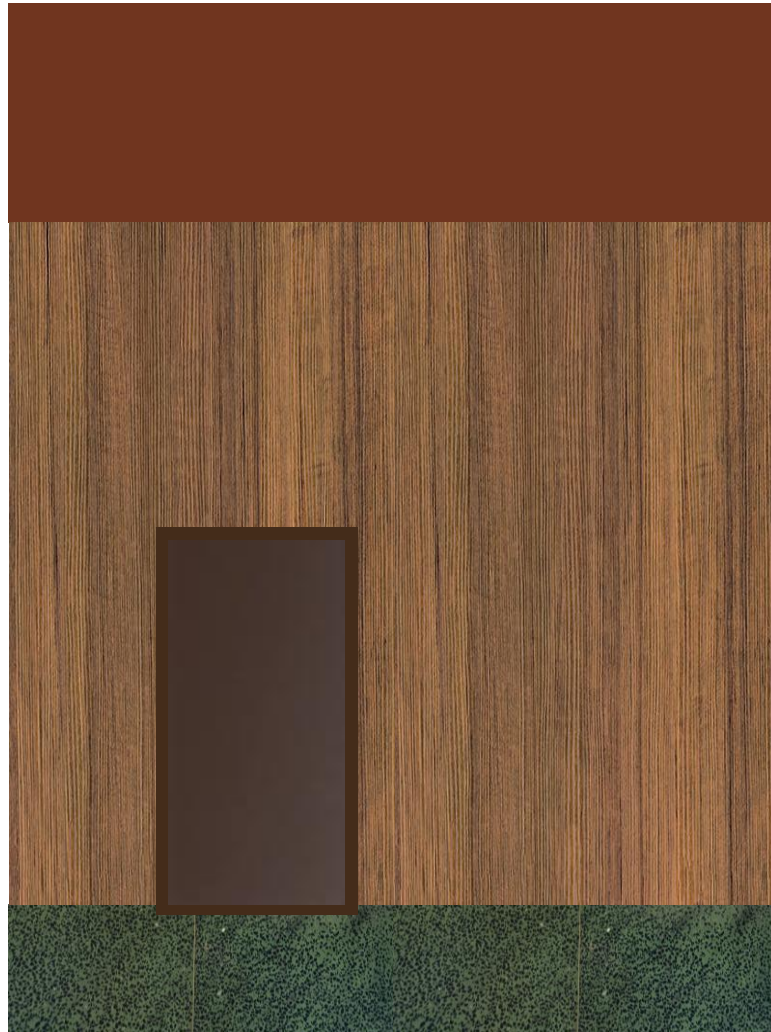


SANDVIKA TEATER

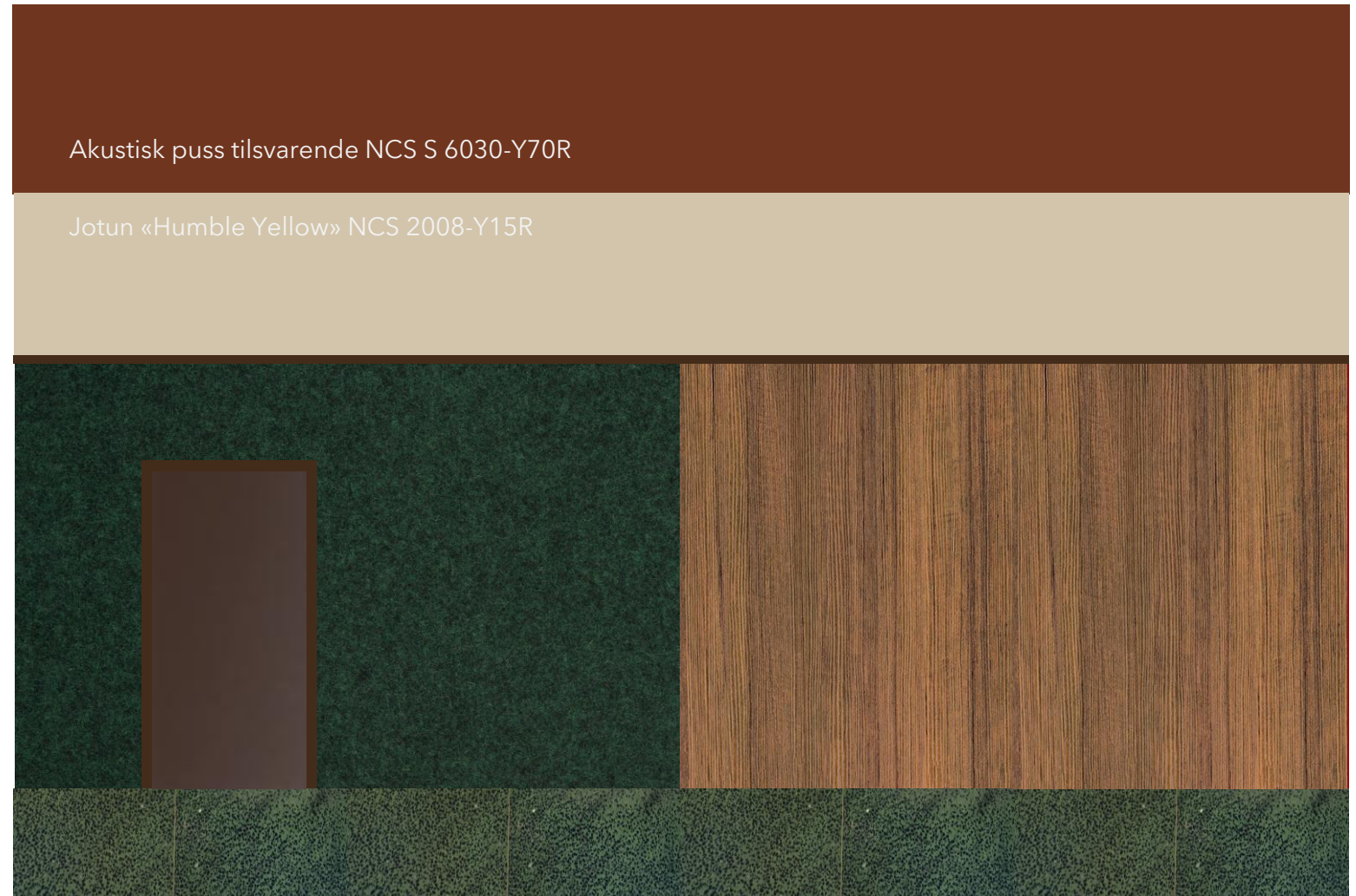
Farge- og materialkonsept
Fase 2



Fargekonsept Foajé



DØRBLAD OG MALT KARM:
- F2200 Dark Chocolate
- NCS S 8010-Y50R



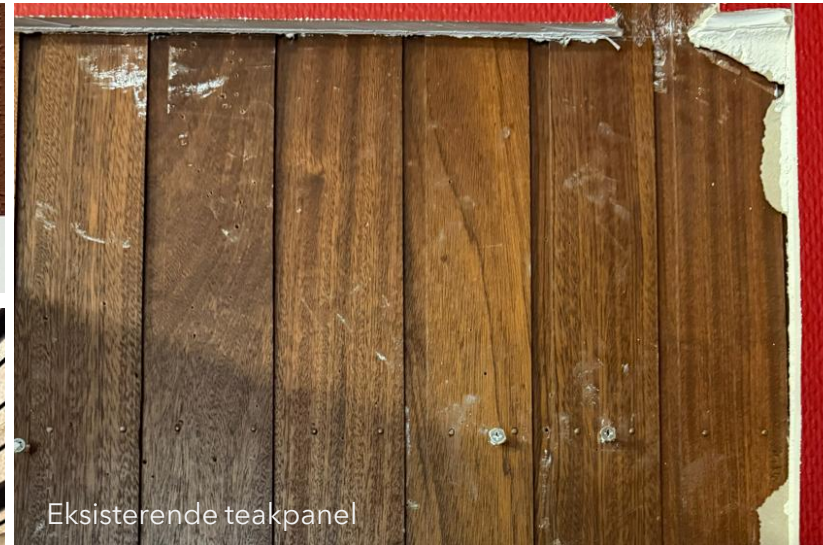
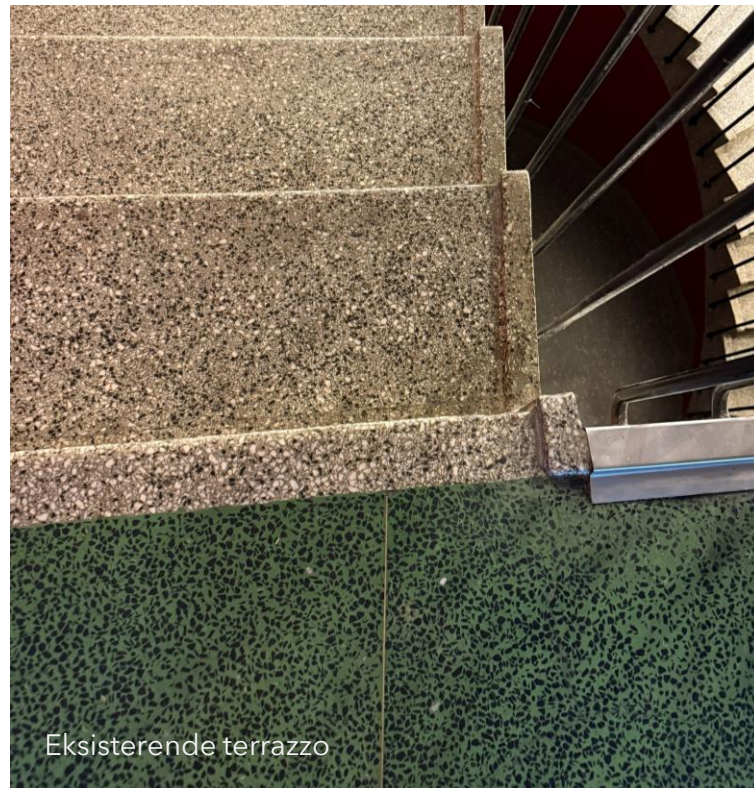
Akustisk puss tilsvarende NCS S 6030-Y70R

Jotun «Humble Yellow» NCS 2008-Y15R

Fargekonsept Foajé, illustrasjon



Materialer Foajé



Fino Trevo
PGK460

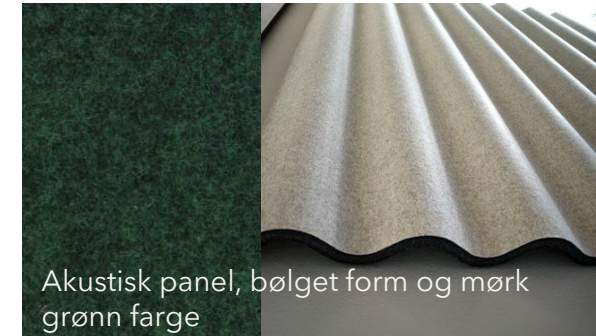
Collection
Pavigres 21 Fino

Format
297x297mm

Thickness
8.3mm

Type of material
Porcelain tiles

Traffic level
High

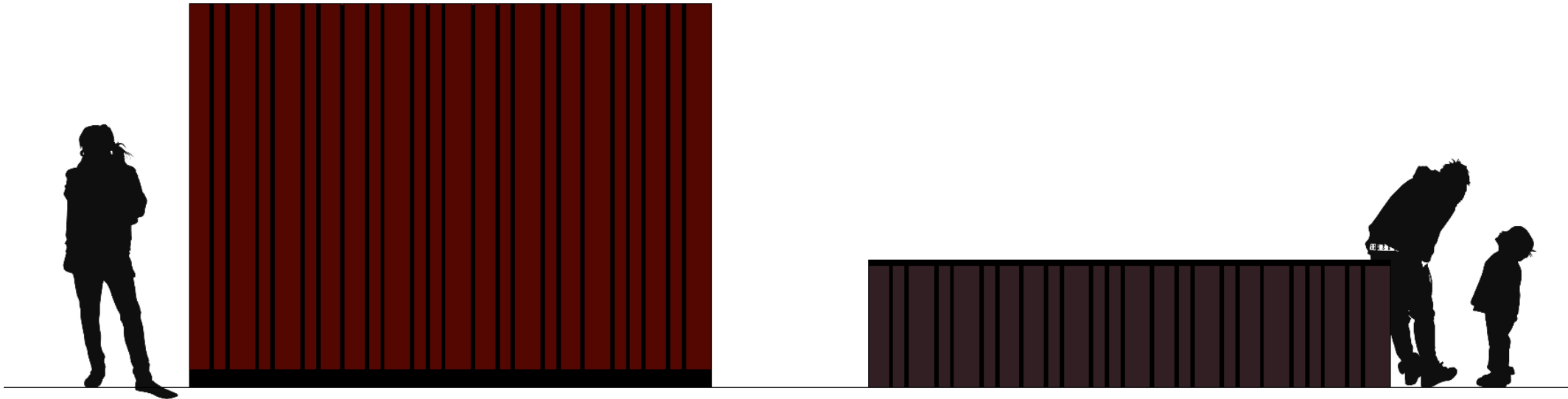


Fargekonsept SAL - rød



VEGGFARGE: NCS S 8010 -R10B
GULVBELEGG: Forbo Marmoleum
Real 3236 Dark Bistre
TEKSTIL STOLER:
Kvadrat Canvas 2, 576

Spaltepanel og spilevegg i SAL



SPALTEPANEL/SPILER PÅ VEGG LIK VEGGFARGE:

NCS S 8010 -R10B

SPALTEPANEL PÅ REKKVERK: Teakfarge på trepanel,
utførelse lik eksisterende teak veggpanel

